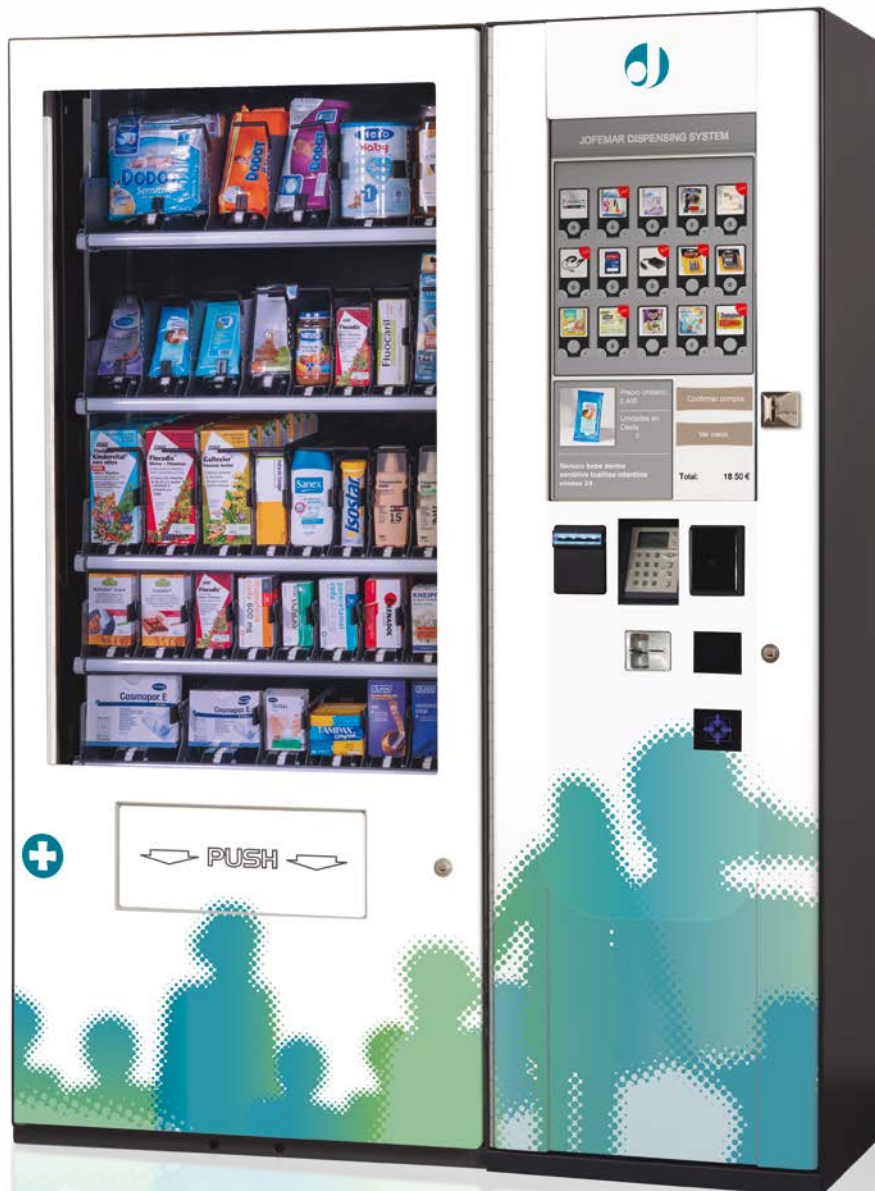


MSK Parapharmacy



Equipped with a central module with **interactive screen of 27"** that can be connected up to 4 dispensing units. It has been developed for the uninterrupted automatic sale of pharmacy and parapharmacy products, in such a way that the customer's point of sale network can be expanded.

It improves the **interactivity and the experience** of the user with an interface that optimizes the display of detailed information of each product before purchasing it. It guarantees maximum safety supply thanks to a **perfect control of inventories** and total traceability. Designed as a system of selection and prepaid, you can incorporate any payment system: effective (both acceptance and return of banknotes and coins), credit card, loyalty card (RFID reader and optional barcode reader).

VISION E-S PLUS PRINCIPAL FEATURES

- Capacity for up to 8 trays adjustable in height with up to 10 channels each.
- FIFO sale system.
- Detection of correct sale by means of photocells.
- Lighting by LED system with programming of on and off times.
- Transparent front.
- Continuous self-test of operation.
- Flexible configuration, changing the position of channels and partitions without tools.
- Thrust force of engines programmable from each channel of the main machine.
- Modular furniture structure protected against corrosion and rust.
- Vandal resistant lock with three anchor points.
- Isolation for injected foam that assures the maximum energy efficiency.
- The versions can incorporate group of refrigeration and elevator.

MSK PRINCIPAL FEATURES

- Capable of managing up to four vending machines.
- 27" vertically oriented touchscreen.
- PC-based computer control system.
- It is widely configurable. It can be equipped with different interchangeable fronts for:
 - Jofemar compact purse with engine of exterior recovery.
 - Banknote reader with or without dispensing system.
 - Motorized card reader.
 - Different bank card readers (ingenico, verifone ...).
 - Printer.
 - Jofemar key reader.
 - Code bar reader.
 - GPRS or UMTS modem.
 - Up to four Jofemar return hoppers.
- Optional amplified speakers.
- Multi-voltage power supply (110-230 V).
- Anti-vandal security lock.
- Prepared for an installation of a SAI (not supplied by Jofemar).

VISION E-S PLUS		MSK	
Maximum capacity	8 trays of up to 10 channels	Inches of the screen	27
Elevator	Yes	Size	1.834 x 550 x 474 mm
Dimensions (mm)	1.830 x 803 x 970	Charge for coins	Yes
Weight	325 kg	Banknote reader option	Yes
Electrical power supply	230 V, 50 Hz*	Credit card option	Yes
Cold group	Optional	Printer option	Yes
		Option of return of banknotes	Dispenser
		Bar code reader option	Si



VANDAL-PROOF LOCK



OPTIMISED CAPACITY AND VOLUME



ENERGY-SAVING LED LIGHTING



TOUCH SCREEN



ADAPTABLE AND CUSTOMIZABLE MANAGEMENT SOFTWARE



CONFIGURABLE ACCORDING TO NEEDS



CLOUD REMOTE CONNECTION



EASYFLEX DELIVERY SYSTEM



PRODUCT DELIVERY DETECTION PHOTOCELLS



Ctra. Marcilla km 2
31350 PERALTA. Navarra SPAIN
Tel. +34 948 75 12 12
Fax +34 948 75 04 20

www.jofemarm vending.com

